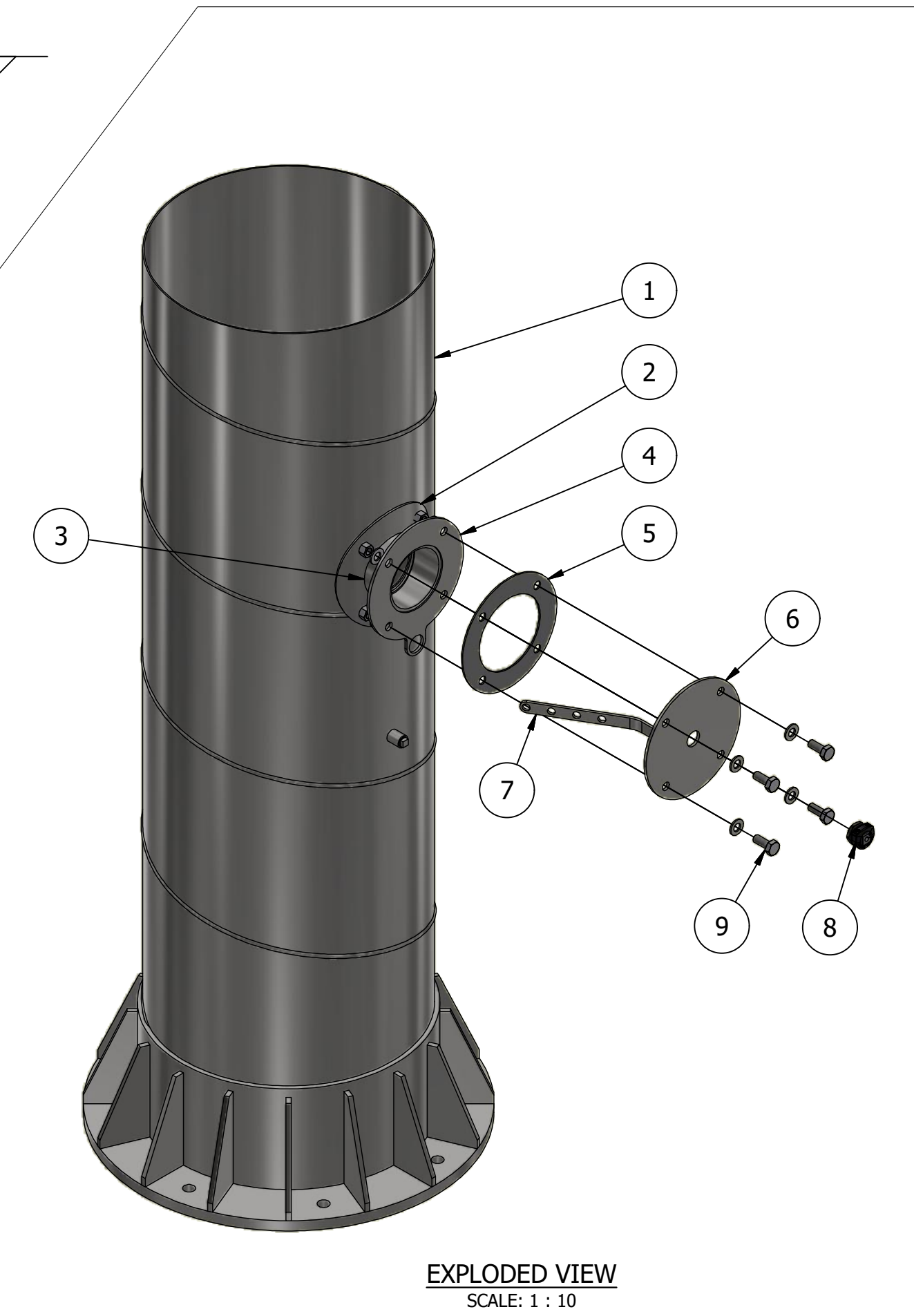
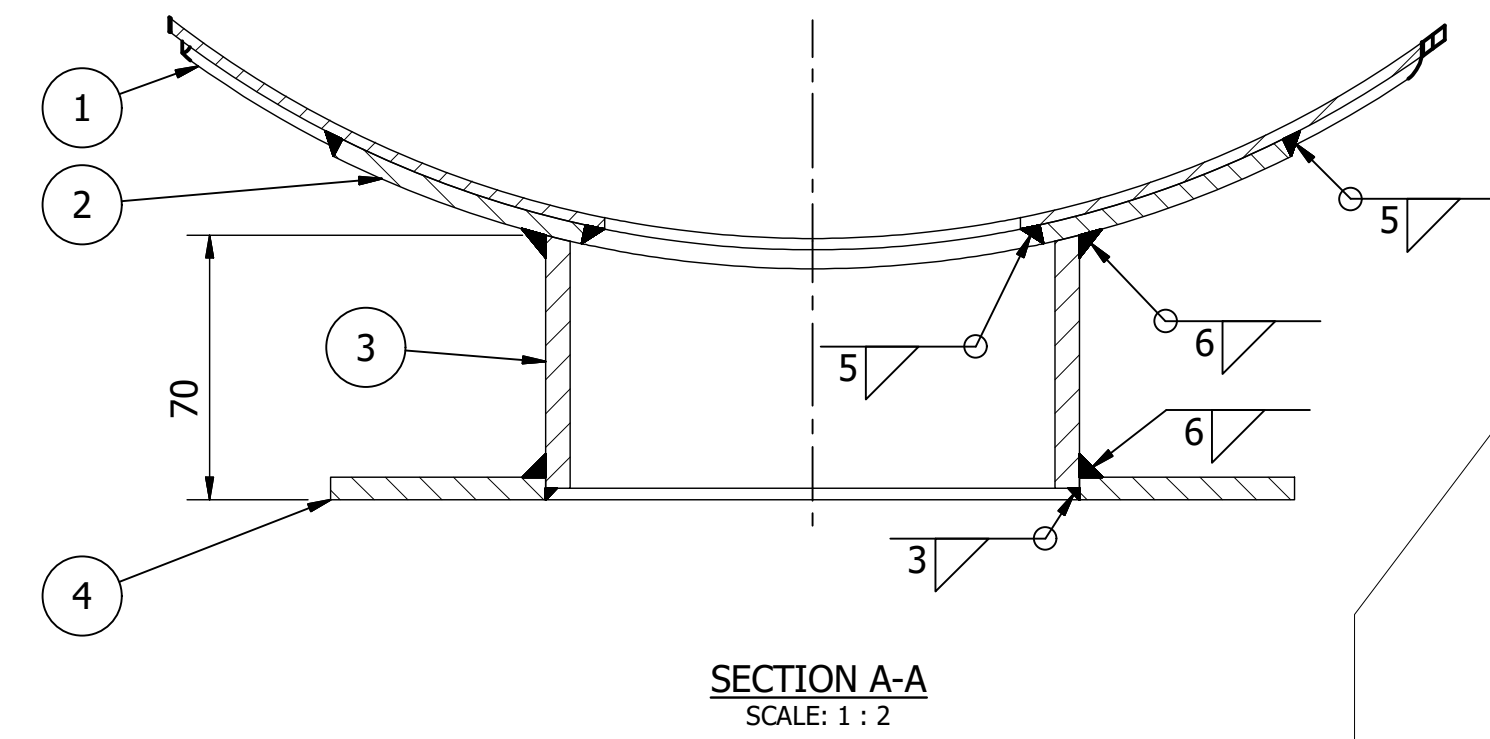
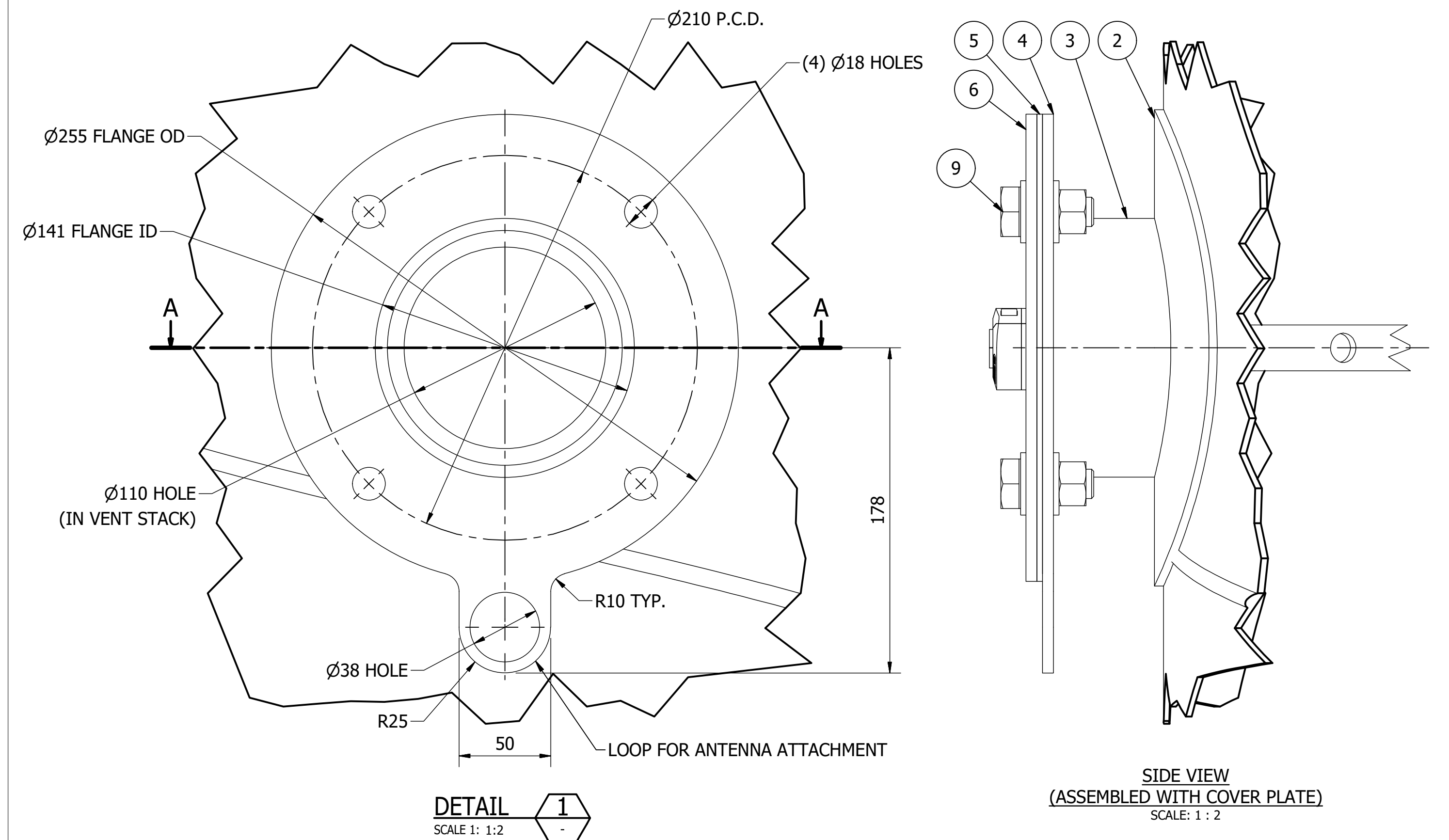
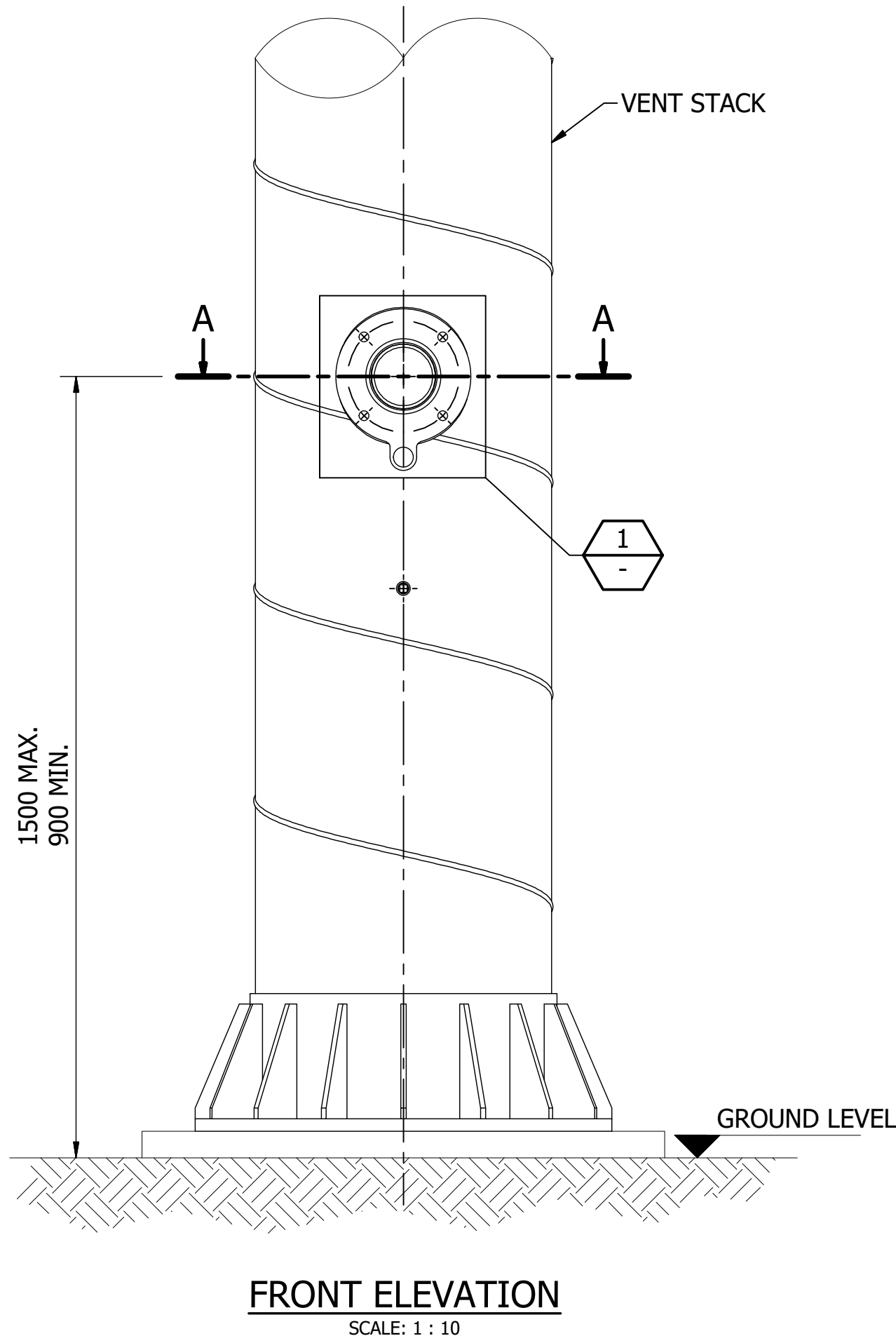
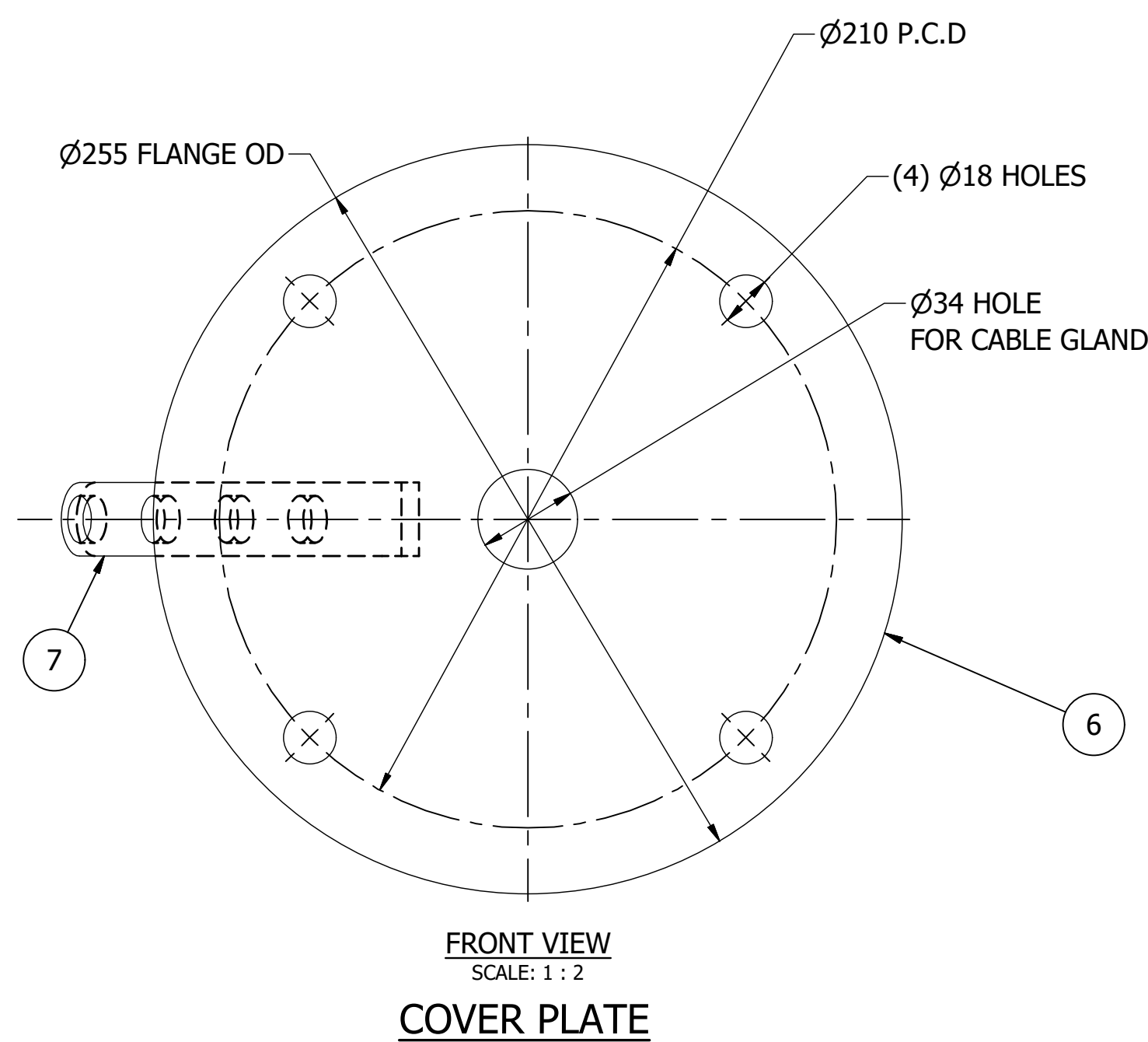
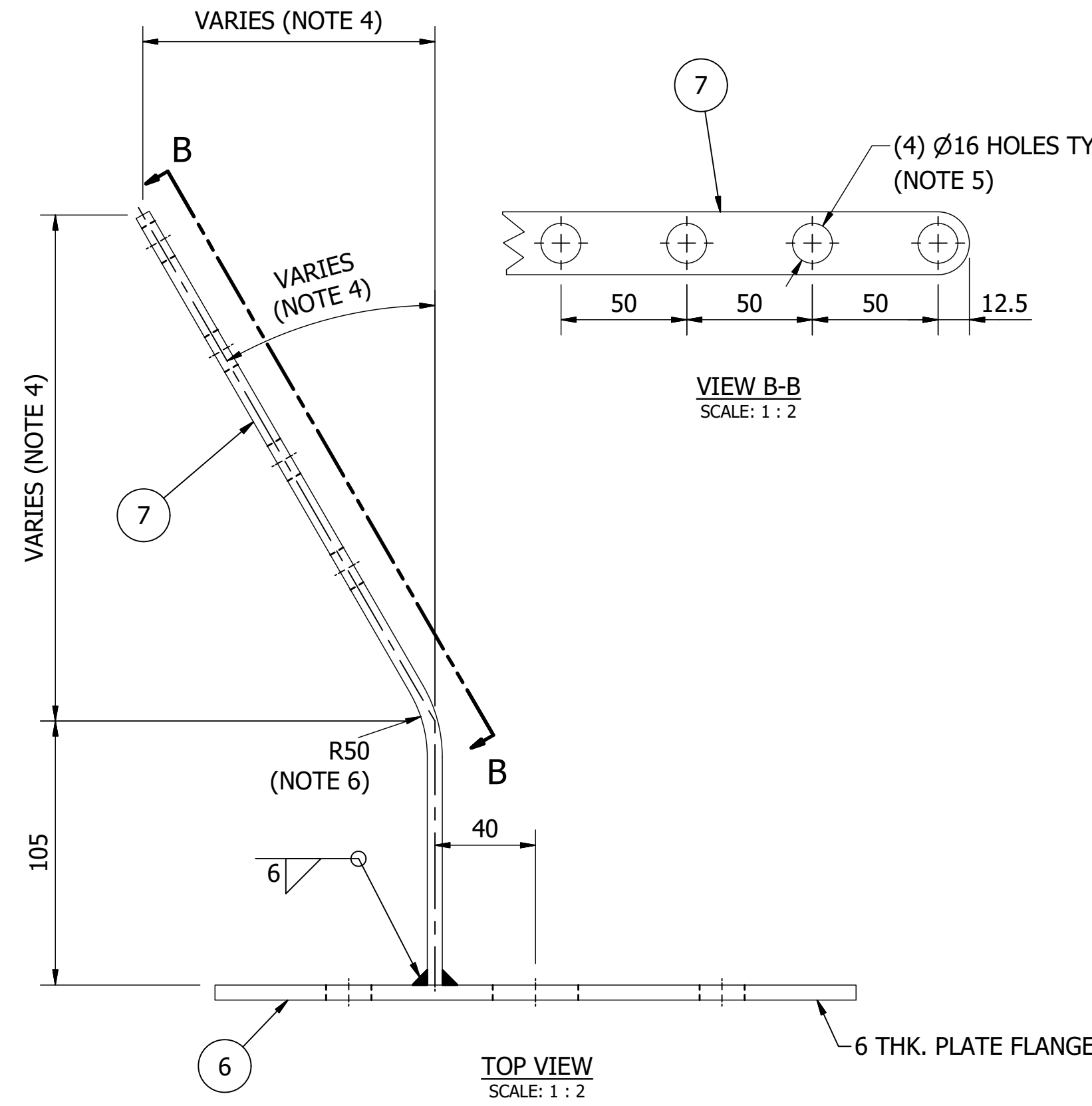
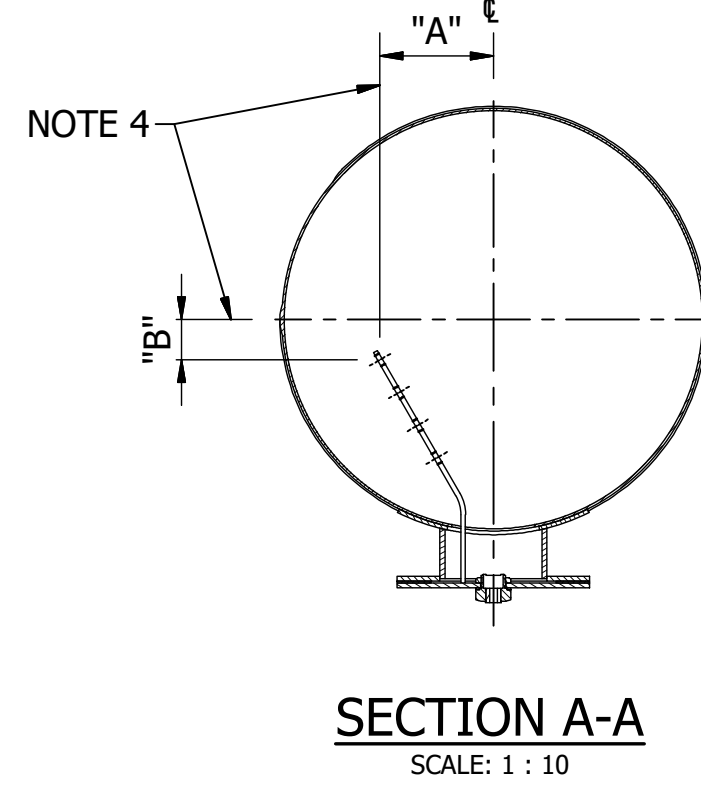


PARTS LIST

ITEM	MATERIAL	DESCRIPTION	QTY	MASS
1	Stainless Steel	VENT STACK	1	N/A
2	Stainless Steel	5 PL REINFORCING PAD	1	1.7 kg
3	Stainless Steel	DN125 SCHD. 40 PIPE	1	1.4 kg
4	Stainless Steel	DN125 x 6 THK PLATE FLANGE WITH ANTENNA ATTACHMENT LOOP	1	1.8 kg
5	Rubber	3 THK NATURAL RUBBER GASKET TO SUIT FLANGE	1	80 g
6	Stainless Steel	DN125 x 6 BLANK PLATE FLANGE WITH 34 DIA. HOLE FOR INSTRUMENT CABLE	1	2.4 kg
7	Stainless Steel	25 x 6 FL INSTRUMENT HANGER	1	0.4 kg
8	N/A	ICOTEK CABLE GLAND DN32	1	40 g
9	Stainless Steel	M16 NUT, BOLT AND WASHERS	4 EACH	100 g



NOTES

- FOR STEELWORK NOTES REFER TO SD-9100-D.
- VENT STACK AS SHOWN IS INDICATIVE. INSTRUMENT HANGER TO SUIT PROJECT SPECIFIC APPLICATION.
- INTRUMENTATION PORTAL SUITABLE FOR VENT STACKS > DN200.
- DIMENSION OF HANGER (PART 7) VARIES TO SUIT STACK DIA. SEE TABLE:

DIMENSION	DN200	>200 - ≤DN300	>DN300
"A"	40	50	150
"B"	40	50	50
- REDUCE NUMBER OF HOLES TO SUIT HANGER LENGTH FOR STACKS <DN600. (MIN 1 HOLE REQUIRED.)
- BEND NOT REQUIRED FOR DN200 VENT STACKS

No.	ISSUE	DATE	DRAWN	CHECKED	AUTHORISED
A	INITIAL ISSUE	11/02/2020	M. Matusiak	V. Gallagher	K. Danenbergs

DAM	RES	SPS
BWS	WAT	STP
WTP	SEW	
WPS	REC	

ASSET AREA APPLICABILITY



STANDARD DRAWING
SEWERAGE NETWORK
VENTILATION SYSTEMS
INDUCT AND EDUCT VENTS
INSTRUMENTATION PORTAL

DRAWING STATUS	
Current	
SD-2300-D	
A1	ISSUE A

© Icon Water 2017