

Site tour factsheet

Cotter Dam Discovery Trail

The Cotter Dam Discovery Trail

The Cotter Dam Discovery Trail (CDDT) is a 1.4km loop trail which leads you along the Cotter River and through the surrounding natural environment. Commencing near the car park, opposite Cotter Avenue, near Cotter Road, the Cotter Dam Discovery Trail continues along the Cotter River towards a 16-meter wide, amphitheatre style viewing platform which provides direct views of the Cotter Dam.

The trail is lined with stories of Canberra's water history, providing students and community groups the opportunity to learn about the environmental, engineering, suitability and water supply aspects of the Cotter Dam enlargement project, as well as the Indigenous and European heritage values of the area.

Visitor numbers and ages

Group sizes for onsite tours are limited. Group sizes cannot exceed 30 people at any time. Student groups require a supervisor (e.g. a teacher or lecturer). Additional tours can be arranged to accommodate for larger groups. Tours are suitable for upper primary to community groups.

The CDDT is a gentle climb suitable to most levels of participant fitness. The return trip does include stairs, however, those who cannot use stairs are able to return via the same path that they came.

The CDDT is classed as 'wheelchair assisted' so it is fine to access via wheelchair if someone is pushing the wheelchair but may be too steep for someone moving their own chair manually.

What you need to know

There is no mobile phone reception at the Cotter.

No dogs are allowed at Cotter Avenue or on the Cotter Dam Discovery Trail.

There are no rubbish bins onsite (all rubbish will need to be taken with you).

There is no smoking allowed on the trail.

There is limited shelter in the Cotter Avenue

What you need to bring

- All visitors should wear comfortable enclosed walking shoes and clothing for outdoors.
- All visitors should be prepared for weather conditions including being sun smart, wearing hats and bring their own water bottles.
- Please ensure your group brings a first aid kit with them.



In the event of an emergency and tour cancellations

Icon Water will provide a tour guide but responsibility for the group remains with the school or organising organisation. Guides will have truck radios on them in case of emergency.

Tours to the CDDT may be cancelled with minimal notice. If possible, alternative activities should be arranged. Reasons for cancellations may include:

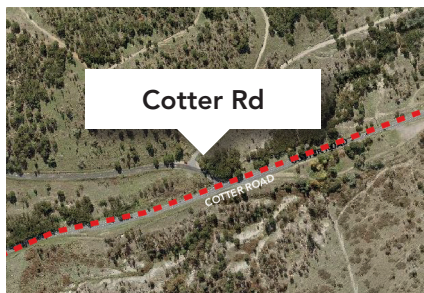
- total fire bans or extreme heat
- high winds, heavy rainfall or storm activity
- tour guide unavailability.

Groups will be notified the day of their tour. If you cannot reach your tour guide contact customer service on (02) 6248 3111.

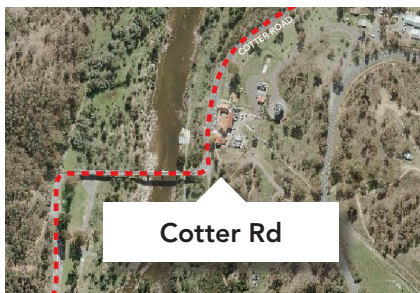
How to get to the Cotter Dam Discovery Trail

All groups need to provide their own transport to the Cotter. Cotter Avenue is approx. 23 km from the city of Canberra on the Cotter Road. Travel time can be up to 35 mins.

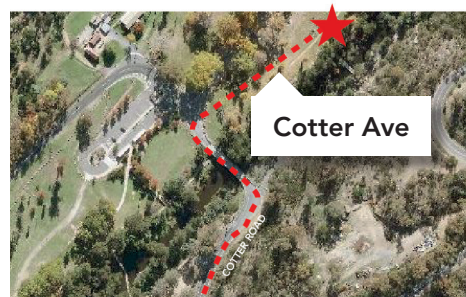
How to get to the Cotter Dam Discovery Trail



Follow Cotter Road past the turn off to Mount Stromlo.



Continue on Cotter Road past the Cotter Pumping station and over the bridge.



Follow the Cotter Road all the way to the second bridge. Turn right onto the Cotter Avenue. Parking is available for buses opposite the toilet block.

