

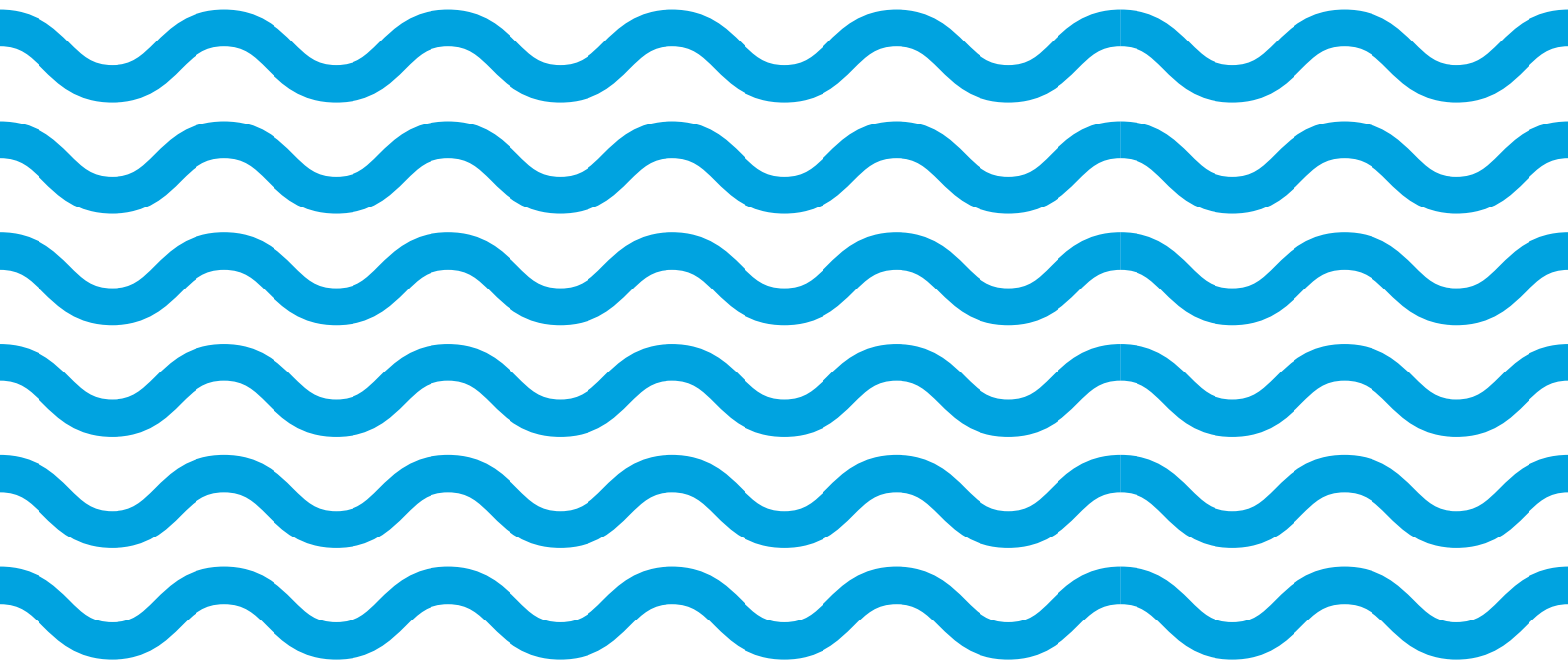


Cotter Dam: OEMP

Operation Environmental Management Plan




Version 3

July 2015



Certificate of approval for issue of documents

Title Cotter Dam Operational Environmental Management Plan
Version 3
Document status For approval
Date of issue 30 June 15
Originator name Chris Pulkkinen

	Position	Name	Signature	Date
Prepared By	Team Leader Monitoring & Rehabilitation	Chris Pulkkinen		24/06/15
Reviewed By	Senior Environmental Projects Officer	John Hyam		24/06/15
Approved By	A/g Manager Environment and Sustainability	Ben Bryant		02/07/15

Document revision control

Version	Author	Date	Reviewed by	Description
1	Benjamin Bryant	05/11/13	John Dymke, Cameron Patrick, Teresa Morey, Joe Cortese, Bronwen Butterfield, Chris Pulkkinen, Craig Hardge, James Gray, Tim Purves, Jonathan Thirkell	
2	Benjamin Bryant	21/11/13	Bronwen Butterfield	Review
3	Chris Pulkkinen	02/07/2015	John Hyam, Ben Bryant	Review and rebrand

@ Icon Water Ltd 2015

This publication is copyright and contains information that is the property of Icon Water Ltd. It may be reproduced for the purposes of use while engaged on Icon Water commissioned projects, but is not to be communicated in whole or in part to any third party without prior written consent.

Contents

Certificate of approval for issue of documents	3
Contents	5
1. Introduction	6
2. Site Information	8
3. Activity Description	10
4. Environmental Risk Mitigation	11
5. Corporate Governance	15
6. Review	19
7. Appendices	20
Appendix A Environmental Management Policy	21
Appendix B Statutory Framework	23
Appendix C Icon Water Emergency Contacts	25

1. Introduction

1.1 Purpose of the OEMP

Icon Water has developed this Operational Environmental Management Plan (OEMP) to outline the overarching environmental governance framework under which the new Cotter Dam operates following construction completion in October 2013. The OEMP framework includes a series of sub plans and activities specific to environmental elements as required under the conditions of approval.

Icon Water will ensure that environmental controls are properly implemented and are regularly monitored and audited to assess their effectiveness. Reviews, as specified in Section 6, are designed to identify and instigate improvements to controls where necessary.

The OEMP is consistent with:

- Icon Water's ECD Public Environment Report commitment under Section 2.4.5 (p36) to develop an OEMP for the ECD
- Icon Water's approach to ecologically sustainable development as outlined in its Environmental Management Policy (Appendix A)
- Icon Water's 'Policy and Process Documents' certified quality (ISO 9001), environmental (ISO 14001) and safety (AS 4801) management system, which includes procedures, work instructions and activity-specific environmental work method statements
- Icon Water's Guardian incident, action and risk management system
- Icon Water's Water Supply & Sewerage Emergency Plan
- Icon Water's operations and maintenance works through the WASP System.

The OEMP was developed with reference to of the ACT EPA's *Environmental Guidelines for Preparation of an Environmental Management Plan* (2009); however only relevant sections were utilised as the scope of this OEMP is a limited form of EMP as a document for indicating the overall architecture of issue-specific environmental sub plans and actions.

1.2 Environmental management and monitoring sub plans

In compliance with development approvals and Environmental Impact Statement commitments, Icon Water has developed a series of issue specific sub plans for the management of particular aspects of the new Cotter Dam's operation.

1.2.1 Commonwealth Sub Plans

- Fish Management Plan (including Alien Fish Management Plan)
- Filling Plan (called Management of Macquarie Perch during Filling Phase Report)
- Below Dams Ecological Monitoring Program (the formal name is "Biological response to flows downstream of Corin, Bendora, Cotter and Googong Dams") (part program only – below Cotter).

1.2.2 ACT Sub Plans

- Below Dam Ecological Monitoring Program (part program only – below Cotter)

- Biodiversity Offset Implementation Program
- Compliance Tracking Plan
- Landscape Rehabilitation Management Plan.

For many operational environmental management aspects, existing business systems and functions were utilised rather than isolated sub plans which would otherwise duplicate existing processes and procedures. Existing systems and functions are set out in Section 5. The Cotter Dam Development Approval and EIS Compliance Obligations Register, under the Compliance Tracking Plan also specifically identifies plans and sub-plans which Icon Water implements to meet its compliance objectives.

1.3 Statutory Framework

Approvals for the new Cotter Dam included:

- ACT Planning and Land Authority – Notice of Decision dated 16 September 2009 with Conditions of Approval under Section 165 of the *Planning and Development Act 2007* (ACT);
- Commonwealth Department of the Environment – Approval Decision dated 21 October 2009 of the Public Environment Report with Conditions of Approval under Sections 130(1) and 133 of the *Environment Protection and Biodiversity Conservation Act 1999* (Cth); and
- Icon Water – Environmental Impact Statement Chapter 8 Commitments completed in June 2009.

Icon Water operates the ECD in compliance with the ‘Licence to Take Water (WU67) under the *Water Resources Act 2007* (ACT).

Icon Water also complies with the comprehensive list of environmental legislation, standards, guidelines and approvals relating to environmental management for the operation of the Cotter Dam outlined at Appendix B.

1.4 Icon Water’s Commitment to Sustainability

Icon Water is governed by the *Territory-Owned Corporations Act 1990* (ACT) which establishes a main objective for Icon Water as being to operate in accordance with the objective of ecologically sustainable development, defined as the effective integration of environmental and economic considerations in decision-making processes. This requirement is supported by Icon Water’s Environmental Management Policy (Appendix A).

2. Site Information

The new Cotter Dam (referred to as the Enlarged Cotter Dam (ECD) during project construction) has a key role in helping secure the water supply for the ACT and surrounding region, allowing the community to deal with frequent, longer and more severe droughts without having to endure high-level water restrictions for extended periods. The location of the Cotter Dam is illustrated at Figure 2.1.

Construction of the dam commenced in November 2009 and concluded in October 2013. Construction of the new Cotter Dam involved building a new 80 metre high dam approximately 100 metres downstream of the original Cotter Dam, as well as two substantial earth embankment dams adjacent to the main dam. Works also included upgrading recreational facilities within the Cotter precinct including Casuarina Sands and Cotter Avenue, in addition to a new walking trail and public viewing platform.

The new Cotter Dam has a capacity of 76 gigalitres (GL), approximately 20 times the size of the original Cotter Dam, which has increased the ACT water storage capacity by 35%.

The Environmental Impact Statement (EIS) and Public Environment Report (PER) developed for the Cotter Dam construction project contain extensive project and site information, which will not be duplicated in this OEMP. Particular chapters of relevance include:

- [PER Chapter 3. Location and Tenure](#)
- [EIS Chapter 2. Project Description](#)
- [EIS Chapter 4. Existing Conditions](#)
- [PER Chapter 7. Environmental Values and Management of Impacts: Terrestrial](#)
- [PER Chapter 8. Environmental Values and Management of Impacts: Aquatic](#)
- [EIS Chapter 5. Potential Environmental Impacts](#)
- [EIS Chapter 6. Potentially Significant Environmental Impacts.](#)

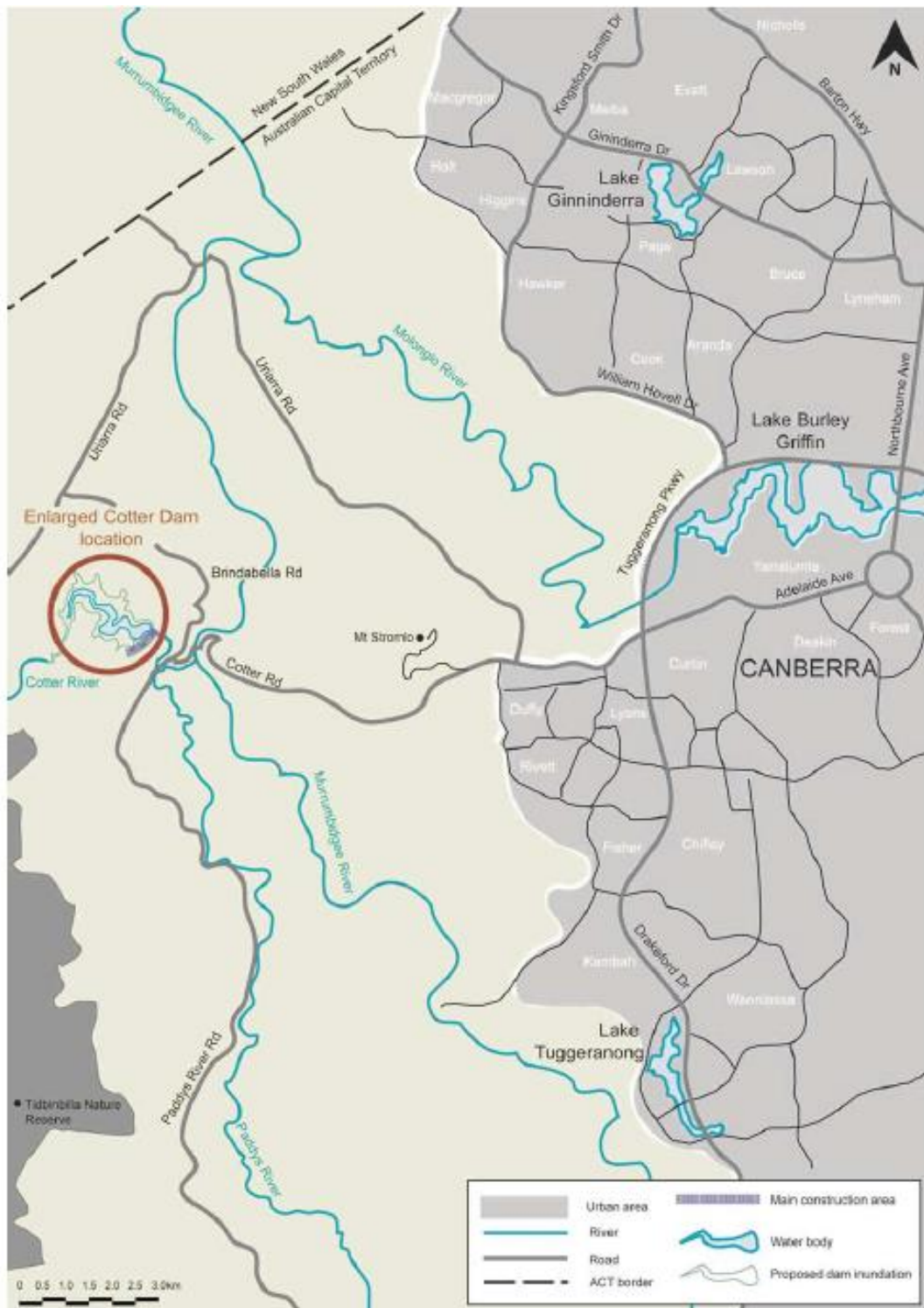


Figure 2.1 Cotter Dam location

3. Activity Description

The workforce, catchment management and other key operating parameters for the Cotter Dam is similar to the operation of the previous existing Cotter Dam. Notably, with the exception of the inundation area, management requirements of the catchment have not changed.

The new Cotter Dam is expected to play a significant role in Canberra's water supply system as an actively operated water supply reservoir. In typical weather, the Cotter Reservoir is expected to be at or very near to full supply level 50 % of the time. However, during drought conditions the dam can be drawn down significantly, while in wet conditions water may not be sourced from the dam for several years. This causes an increased variability in water levels when compared to the original Cotter Dam.

The two key environmental issues relating to ongoing operation of the Cotter Dam are the management of the habitat of threatened aquatic species and the release of flows downstream of the reservoir. These issues are addressed through the Fish Management Plan, the Filling Plan (incorporated operationally into the Fish Management Plan Version 3), the Below Dam Ecological Monitoring Program and the Licence to Take Water.

In the initial period following construction a third environmental issue will be rehabilitation until acceptance of the construction-affected area by the ACT Parks and Conservation Service. This issue is addressed through the Terrestrial Flora and Fauna Management Plan and Landscape Rehabilitation Monitoring Plan under the Construction Environment Management Plan. Representatives from Parks and Conservation Service and the Icon Water Environment and Sustainability Unit have formed a working group, which meets regularly on site to review environmental condition during the defect liability period.

4. Environmental Risk Mitigation

The development approval conditions required development of a series of issue specific sub plans for the management of particular environmental risks associated with the Cotter Dam's operation, some of which are legacy construction issues to be closed out, as listed in Section 1.2 and described below.

The Environmental Impact Statement (EIS) and Public Environment Report (PER) developed for the Cotter Dam construction project contain extensive environmental impact and risk mitigation measures, which will not be duplicated in this OEMP. These can be viewed on Icon Water's public internet page. Particular chapters of relevance include:

- [PER Chapter 7. Environmental Values and Management of Impacts: Terrestrial](#)
- [PER Chapter 8. Environmental Values and Management of Impacts: Aquatic](#)
- [EIS Chapter 5. Potential Environmental Impacts](#)
- [EIS Chapter 6. Potentially Significant Environmental Impacts.](#)

4.1 Fish Management Plan

The Fish Management Plan (FMP) consists of four versions designed to assist in the protection of threatened aquatic species potentially impacted by the construction and operation of the Cotter Dam at various stages of the project. All versions are subject to the approval of endorsed by ACT Parks and Conservation Service (note that since the conditions of approval were issued the Conservation Planning and Research is now within the Environment and Sustainable Development Directorate rather than PCS), ACT Territory and Municipal Services and the Commonwealth Department of the Environment before finalisation.

During the new Cotter Dam design and construction, FMP Version 1 was released in February 2009 and FMP Version 2 was released in November 2010. FMP Version 3 was approved in November 2013 and manages the reservoir during the filling phase. FMP Version 4 is expected to be released once the new Cotter Dam filling is completed around 2016/17.

The Fish Management Plan V3 specifically includes:

1. A comprehensive fish monitoring program that test the following hypotheses:
 - a. Has there been a significant change in the abundance and body condition of Macquarie perch in the Cotter River above and below Vanity's Crossing as a result of filling and operation of ECD?
 - b. Has there been a significant change in the abundance and body condition of Macquarie perch in the ECD reservoir as a result of filling and operation of ECD?
 - c. Have Two-spined blackfish established a reproducing population in the ECD reservoir and are they persisting in the newly inundated section of the Cotter River?
 - d. Has there been a significant change in the abundance, distribution, and size composition of adult trout in the ECD as a result of filling and operation?
 - e. Has there been a significant change in the abundance, distribution, and size composition of adult trout in the Cotter River upstream of the ECD as a result of filling and operation?

- f. Are Two-spined blackfish and Macquarie perch present in trout stomachs in the Cotter River?
 - g. Has there been a significant change in the abundance and distribution of non-native fish species in the ECD reservoir as a result of filling and operation?
 - h. Has there been a significant change in the abundance, distribution and species composition of piscivorous birds in the vicinity of ECD reservoir as a result of filling and operation?
 - i. Have macrophyte beds re-established in the ECD reservoir?
 - j. Are there adequate food resources for the Macquarie perch following filling and operation of the ECD reservoir?
2. A Macquarie perch Translocation Program
 3. A Macquarie perch management during Filling Phase Plan
 4. An ECD Alien Fish Management Plan.

4.2 Below ECD Long Term Environmental Flows Plan

The Below ECD Long Term Environmental Flow Plan specifies how Icon Water will provide a flow regime below ECD to increase the long term flows of the Cotter River. This Plan has been approved by the Commonwealth Department of the Environment and includes provisions of base flow as well as regular higher volume flushing flows.

4.3 Below Dams Ecological Monitoring Program

The Below Dams Ecological Monitoring Program (the formal name is “Biological response to flows downstream of Corin, Bendora, Cotter and Googong Dams”) consists of monitoring events in Spring and Autumn each year to determine the biological responses to and effectiveness of environmental flows for ACT aquatic ecosystems subject to flow regulation versus unregulated reference sites.

The Program existed under the ‘Licence to Take Water from Cotter, Queanbeyan and Murrumbidgee Rivers (WU67)’ prior to supplementary matching requirements under the new Cotter Dam conditions of approval.

Reports from the Below Dam Ecological Monitoring Reports are published on the Icon Water website and inform adaptive management decisions by both Icon Water and the regulators ensuring that the ACT aquatic resources are appropriately protected.

Only that part of the Below Dams program relevant to below Cotter Dam is relevant to the OEMP.

4.4 Biodiversity Offset Implementation Program

The Biodiversity Offsets Implementation Program (BOIP) was developed to implement the biodiversity offsets provisions of the EIS in consultation with and endorsed by ACT Parks and Conservation Service, ACT Territory and Municipal Services and submitted to ACTPLA prior to the commencement of construction works on site.

The BOIP is currently being implemented implementation on 400 ha of ACT Government land in the Lower Cotter Catchment. The scheduled actions include:

- Weed control
- Willow removal along Paddys River
- Revegetation with endemic trees and shrubs
- Erosion and sediment control; this also covers a five year Memorandum of Understanding with ACT Parks and Conservation Service for sediment control works and maintenance
- Annual monitoring and reporting.

The program is scheduled to be completed by end of 2015.

4.5 Compliance Tracking Plan

The Compliance Tracking Plan is designed to track and audit the requirements of and compliance with the new Cotter Dam conditions of approval. Separate plans exist for construction and operations. The Compliance Tracking Plan (22 May 2014) was approved by ACTPLA on 5 June 2014.

The Compliance Tracking Plan includes:

- a. provisions for periodic review of the compliance status of the development against the requirements and conditions of approval
- b. provision for periodic reporting of compliance status to ACTPLA and the EPA
- c. mechanisms for rectifying any non-compliance identified during auditing or review of compliance.

A Cotter Dam Development Approval and EIS Compliance Obligations Register was developed under the Plan as the key instrument to facilitate ongoing compliance tracking. This register is subject to periodic review.

4.6 Other Plans rolled across from the Construction Environmental Management Plan to the OEMP during the defect liability period to Oct 2014

The below mentioned Plans are only relevant to the OEMP during the defect liability period from October 2013 to October 2014 and until acceptance of the construction-affected area by the ACT Parks and Conservation Service as the enduring land manager. During the period until handover, the ongoing rehabilitation progress requirements and standards set out in these Plans are to be addressed through six-monthly environmental condition assessments with subsequent reactive maintenance as relevant.

4.6.1 Terrestrial Flora and Fauna Management Plan

The Terrestrial Flora and Fauna Management Plan was designed to address the impacts on local ecology due to the removal of native and exotic vegetation associated with construction of the new Cotter Dam. The Plan included provisions relevant to the defect liability period for:

- revegetation of impacted areas in the construction footprint with appropriate indigenous species propagated from locally collected reproductive material
- assessing terrestrial flora and fauna condition prior to, during and after construction.

This plan is no longer relevant (as defect liability has passed) and is considered closed.

4.6.2 Landscape Rehabilitation Management Plan

The Landscape Rehabilitation Management Plan outlined rehabilitation management objectives and activities necessary to successfully rehabilitate areas impacted by construction works. The Plan includes provisions relevant to the defect liability period for:

- vegetative cover re-establishment and all land and waterways disturbed by the new Cotter Dam project returned to a stable condition as soon as possible after construction
- Natural drainage patterns are reinstated.

5. Corporate Governance

To support understanding of Icon Water’s implementation of the development approval conditions and project commitments, corporate governance information is provided on Icon Water’s key personnel with responsibilities for the Cotter Dam (5.1), induction and training (5.2), operation and maintenance (5.3), environmental monitoring (5.4), emergency management (5.5), incident reporting (5.6), compliance reporting (5.7), record keeping and document control (5.8) and plans, specifications and charts (5.9).

5.1 Key Personnel

The Water Distribution Engineers, reporting to the Group Manager - Asset Management, are the principal asset operators. The 24-hour contact phone number is 0414 511 719. These personnel oversee the facility’s operation, monitoring and reporting to ensure it is operating in accordance with the licence to take water and the new Cotter Dam conditions of approval. The Environment & Sustainability Section manages Icon Water’s environmental management and compliance.

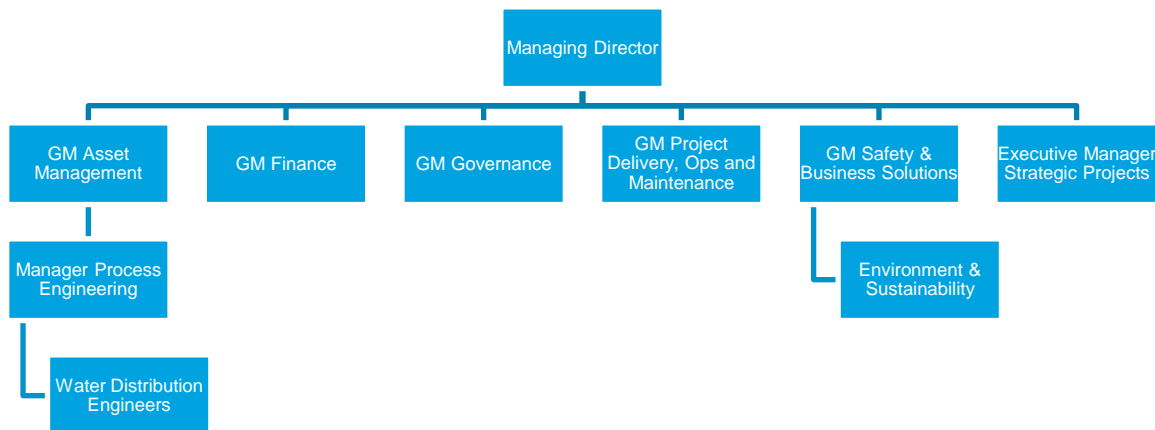


Figure 5.1 Icon Water high level business structure (with key Cotter Dam connections identified)

5.2 Induction and Training

Induction and training processes cover the necessary requirements to ensure the safe and environmentally sound operation and maintenance activities of all staff and contractors.

Prior to commencing work, all personnel, consultants and subcontractors undertake an induction detailing significant environmental requirements associated with the infrastructure. Records of all site inductions and toolbox training will be kept on a database, including details of the training topic(s) presented, participants and training dates. All participants will be required to ‘sign-off’ that they have been informed and understand their obligations at the conclusion of each training session.

5.3 Operation and Maintenance

The Icon Water Annual Operations Plan incorporates seasonal outlooks, water supply catchment and source conditions and expected customer demand to outline a plan for operating the ACT potable water supply network, including the Cotter Dam, for a future defined period.

The operation and maintenance of the Cotter Dam infrastructure is managed through SCADA and the Works, Asset and Systems Program (WASP) systems respectively under Operational Expenditure (OPEX). These systems are programmed in line with manufacturers' recommendations and operational objectives, including environmental requirements. The Operations and Maintenance Manuals for the Cotter Dam were developed based on manufacturers' recommendations, details operational instructions and details/schedules maintenance requirements for the life of the infrastructure including dam safety, water quality, water operations, electrical mechanical systems, etc. The maintenance program may also be adapted due to performance-based maintenance experience. The infrastructure can be operated remotely.

Any minor capital works requirement identified are considered through a relevance test and subsequent review process under Capital Expenditure (CAPEX), outside of the operation and maintenance process. An asset management review is also undertaken to determine if changes are required to the Asset Management Plan, Maintenance or Operations Program for the asset.

5.4 Environmental Monitoring

Environmental monitoring involves routine collection of samples and interpretation of data to assess performance and compliance as required under and set out in the Fish Management Plan, the Below Dams Ecological Monitoring Program and the Biodiversity Offset Implementation Plan.

Water quality monitoring also occurs in and below the Cotter Reservoir for drinking water purposes, which may be relevant for environmental monitoring purposes. Testing of samples is contracted through a Service Level Agreement (SLA) with a NATA certified laboratory and data validated for parameters to ensure compliance with the Drinking Water License. Trigger levels for set parameters requires the contractor to send immediate alert of results to Icon Water to enable corrective action. The results of monitoring is maintained in Icon Water's Water Data Warehouse, a centralised data repository, and used as a basis for reporting performance and compliance to the regulator.

The results are used to identify potential or actual problems arising from operations and maintenance processes. Where there is a delay due to laboratory procedures or report provision Icon Water will respond to results as soon as they are available.

5.5 Emergency Management

The Cotter Dam has been designed to mitigate plausible system failures associated with flooding, power outage and blockages. In the case of failures beyond design parameters or exposure to emergencies such as flooding, bushfire or terrorism, Sections 5.5.1 and 5.5.2 will be enacted.

5.5.1 Emergency Management Plan

Icon Water has a comprehensive *Water Supply and Sewerage Emergency Plan* which is a single functional emergency and incident response document under the *Utilities – Emergency Planning Code* and *Utilities Act 2000 (ACT)* that combines procedures for managing all emergencies in the Icon Water water and sewerage networks. Any emergency arising from the operations and maintenance of the Cotter Dam will be dealt with under this plan and sub plans (e.g. Dam Safety Plan Cotter River Dams)

5.5.2 Crisis Communications

Icon Water has a *Crisis Communications Plan (CCP)* to provide the mechanism for crisis communications support to affected Business Units or Emergency Management Teams (EMTs) and the Crisis Management Team (CMT) in the event of an incident, emergency or crisis.

Key emergency contacts are listed in Appendix C.

5.6 Environmental Incident

Environmental incidents and non compliances with environmental licences or development approval conditions are required to be recorded and tracked using Icon Water's incident response and reporting protocols set out in *ES 004 Environmental Incident Response and Notification* under the "Policy and Process Documents" certified management system. Incident response and notification ensures that:

- The environmental impact is minimised and cleaned up as soon as practicable
- All relevant parties, including regulators, are informed of the incident
- Mitigation measures are explored and implemented as appropriate to prevent recurrence.

5.7 Compliance Reporting

Compliance reports, in accordance with the development approval conditions, are undertaken and provided to relevant regulators as set out in the Compliance Tracking Plan. Reports are stored in accordance with Icon Water's document control procedure and made available to all staff.

5.8 Record Keeping and Document Control

Icon Water will maintain the records which relate to the environmental performance of the Cotter Dam, including construction, operation and maintenance as required under relevant development approval conditions.

Icon Water will coordinate the preparation, review and distribution of environmental documents related to the facility as required. Existing shared drives, SharePoint, Works, Asset and Systems Program (WASP), Water Data Warehouse, Drawing Management System and the "Policy & Process Documents" structures will be utilised internally for document control.

Documents and data that are to be issued will be controlled to ensure that they are approved prior to issuing and that the current issue or revision is known to relevant personnel. The distribution of controlled documents will be in accordance with the distribution list contained within each document. Controlled documents will be distributed on a revision basis only, with obsolete documents clearly marked as 'superseded'. Obsolete documents will be maintained and filed.

Controlled documents will be uniquely identified with a defined revision number recorded on each page. All controlled document revision numbers will be included into a register for reference. During the scheme's lifetime of operation environmental documents will be stored at Icon Water's Offices or in appropriate archiving facilities.

This OEMP is available to all staff via the intranet. Any reporting requirements for sub plans will be entered onto Icon Water's Report Register to identify document ownership and prompt review as set out in Section 6.

5.9 Plans, Specifications and Charts

Icon Water's internal online Drawing Management System stores work as executed plans for the Cotter Dam categorised by content in terms of architectural, civil, electrical, mechanical, instrumentation, structural, process and other general diagrams.

Charts in relation to operational management of the Cotter Dam are controlled with live diagnostics through Icon Water's SCADA system. Diagnostics include visual representation of infrastructure operation components, continuous monitoring of system parameter performance and alarms to activate and inform adaptive infrastructure management.

6. Review

Review of the OEMP will be undertaken every year for the first three years of Cotter Dam operation (2014, 2015, 2016) and also as required within the first three years to address:

- a change in the scope of the facility;
- a significant environmental incident;
- a requirement to improve performance in an area of environmental impact; or
- natural disaster or force majeure affecting the treatment plant or associated infrastructure.

The purpose of the reviews are to ensure that the OEMP is meeting ACTEW's operational conditions of approval, as set out in the Cotter Dam Development Approval and EIS Compliance Obligations Register under the Compliance Tracking Plan.

The reviews may consider but are not limited to:

- Compliance with the OEMP
- General environmental duty
- Matters raised by the regulator
- Contractor activities
- Training records
- Non-conformances, corrective actions closure
- Environmental monitoring results
- Record keeping and document control
- Resourcing and costs of environmental controls
- Monitoring and audit findings
- The effect of changes in standards and legislation.

ACTEW will amend the OEMP to facilitate continuous improvement for the first three years of operation. Where review identifies non-compliances the following procedures will apply:

- The non-compliance or incident will be investigated by an appropriate team
- Agreed corrective actions will be identified by the team and reviewed by the Manager Water Operations, Manager Water Asset Planning and Manager Environment and Sustainability
- Actions will be implemented to rectify the issue
- ACTEW will check the effectiveness of the corrective actions.

7. Appendices

Appendix A Environmental Management Policy

POLICY PO3

Environmental management



Responsible Executive: General Manager Safety and Business Solutions
Date of Issue: 14 October 2014 Version: 1.0 Next review date: 14 October 2016

1. Scope

1.1.1 All Icon Water workers must apply this policy to all work that they undertake. All Icon Water workers are responsible for understanding, implementing, maintaining and continuously improving the Environmental Management System in areas under their control.

2. Purpose

- 2.1.1 This policy provides high level direction and documents Icon Water's commitment to:
- provide safe water and wastewater services to its customers and the community
 - ensure environmental management and sustainability when designing, operating and maintaining Icon Water's assets
 - prevent pollution.

3. Policy

- 3.1.1 Icon Water is committed to operating and continually improving an effective Environmental Management System (EMS) that conforms to ISO 14001:2004 *Environment Management – Requirements with guidance for use* and support compliance with legal obligations including the *Environment Protection Act 1997 (ACT)*, *Water Resources Act 2007 (ACT)* and the *Territory-owned Corporations Act 1990 (ACT)*. The EMS will operate as a component of a broader Integrated Management System (IMS).
- 3.1.2 In order to achieve organisational objectives and support compliance with legal obligations including the *Environment Protection Act 1997 (ACT)*, *Water Resources Act 2007 (ACT)* and the *Territory-owned Corporations Act 1990 (ACT)*, Icon Water committed to operating and continually improving an effective Environmental Management System (EMS) that conforms to ISO 14001:2004 *Environment Management – Requirements with guidance for use*. The EMS will operate as a component of a broader Integrated Management System (IMS) and includes activities to support operations in accordance with the principles of Ecologically Sustainable Development.
- 3.1.3 The General Manager Safety and Business Solutions is the executive responsible for the EMS and leads its operation and continual improvement. The executive responsible must establish and document EMS objectives (relating to the operation and continuous improvement of the EMS), along with performance measures and targets. The executive responsible also makes decisions in regard to:
- appointing the EMS Management Representative (MR)
 - the focus of improvement effort
 - authorising the EMS objectives, performance measures and targets.
- 3.1.4 All Executives play a key role in applying the EMS in areas under their control. They make decisions to determine the adequacy and effectiveness of environmental management and identify areas for improvement.
- 3.1.5 The EMS MR must:
- ensure the EMS requirements are established, implemented and maintained (in accordance with ISO14001)
 - report on the performance of the EMS to the IMS MR for review and as a basis for improvement of the EMS
 - promote an awareness of environmental requirements throughout the organisation.

4. Definitions

Icon Water uses the terminology contained in ISO 14001:2004.

Term	Definition
Environment	The term environment refers to an organisation's natural and human surroundings. An organisation's environment extends from within the organisation itself to the global system, and includes air, water, land, flora, fauna, as well as human beings.
Executives	Individuals with the title 'General Manager' who report directly to the Managing Director.
Management Representative (MR)	The organisation's top management shall appoint a specific management representative(s) who, irrespective of other responsibilities, shall have defined roles, responsibilities and authority for the EMS. <i>(As defined in ISO14001:2004.)</i>
Ecologically sustainable development	The effective integration of environmental and economic considerations in decision-making processes. <i>(As defined in the Territory-owned Corporations Act 1990.)</i>
Worker	<i>(As defined in the ACT Work Health and Safety Act 2011.)</i> A person/s who carries out work in any capacity including an employee, contractor, employees of sub-contractors, labour hire workers, apprentices, students or volunteers.

5. References

- 5.1.1 *Environment Protection Act 1997 (ACT)*
- 5.1.2 *Water Resources Act 2007 (ACT)*
- 5.1.3 *ISO 14001:2004 Environment Management – Requirements with guidance for use*

6. Document control

Version	Short Description of Amendment
1.0	New policy for Icon Water IMS.

Appendix B Statutory Framework

B.1 Relevant Legislation

Key environmental legislation relating to environmental management for the operation of the Cotter Dam is listed in Table B.1.

Table B.1 Key Environmental Legislation

Legislation

Environment Protection Act 1997 (ACT) & Environment Protection Regulation 2005 (ACT)

Nature Conservation Act 1980 (ACT)

Fisheries Act 2000 (ACT)

Pest Plants and Animals Act 2005 (ACT)

Heritage Act 2004 (ACT)

Native Title Act 1994 (ACT)

Water and Sewerage Act 2000 (ACT)

Water Resources Act 2007 (ACT)

Utilities Act 2000 (ACT)

Territory-owned Corporations Act 1990 (ACT)

Dangerous Substances Act 2004 (ACT)

Waste Minimisation ACT 2004 (ACT)

B.2 Guidelines and Standards

The key reference material relevant to environmental management during the operation of the Cotter Dam is listed in Table B.2.

Table B.2 Guidelines and Standards

Guideline / Standard

General Environment Protection Policy (2007)

Water Quality Environment Protection Policy (2008)

Noise Environment Protection Policy (2010)

Air Environment Protection Policy (1999)

Environmental Guidelines for the Preparation of an Environment Management Plan (2009)

Environmental Guidelines for Construction and Land Development in the ACT (2011)

B.3 Approvals, Licences and Permits

The various approvals, permits and licences relevant to the Cotter Dam are listed in Table B.3.

Table B.3 Approvals, licenses and permits

Approval / License / Permit

‘Licence to Take Water from Cotter, Queanbeyan and Murrumbidgee Rivers (WU67)’
under the *Water Resources Act 2007* (ACT)

Appendix C Icon Water Emergency Contacts

Table C.1 Icon Water emergency contacts

Contact	Phone	Email
Water Distribution	0414 511 719	<u>_waterWDE@iconwater.com.au</u>
Environment & Sustainability	6248 3594	<u>Environment.Sustainability@iconwater.com.au</u>
Icon Water Customers, Faults and Emergencies	6248 3111	<u>talktous@iconwater.com.au</u>

Table C.2 ACT Authority emergency contacts

Contact	Phone	Email
ESDD - EPA	13 22 81	<u>Environment.protection@act.gov.au</u>
ACT Health	6205 1700	<u>HealthACT@act.gov.au</u>
ACT Emergency Services	000 (all phones and mobiles) 112 (GSM phones) 106 (text)	

The *Environmental Incident Response and Notification Work Instruction* outlines what to do and who to contact in response to an environmental incident.



Talk to us

E talktous@iconwater.com.au

T 02 6248 3111

 @iconwater

GPO Box 366,
Canberra ACT 2601

iconwater.com.au

