

The Hydrological Cycle



- 1 Catchment
- 2 Dam
- 3 Pipes
- 4 Water Treatment Plant
- 5 Storage tanks
- 6 Urban water use
- 7 Irrigation
- 8 Sewage treatment plant
- 9 Released back into the river

The Hydrological Cycle

Condensation

Water vapour rises into the atmosphere, where the air is colder. The colder air causes water vapor to condense into water droplets and clouds.

Precipitation

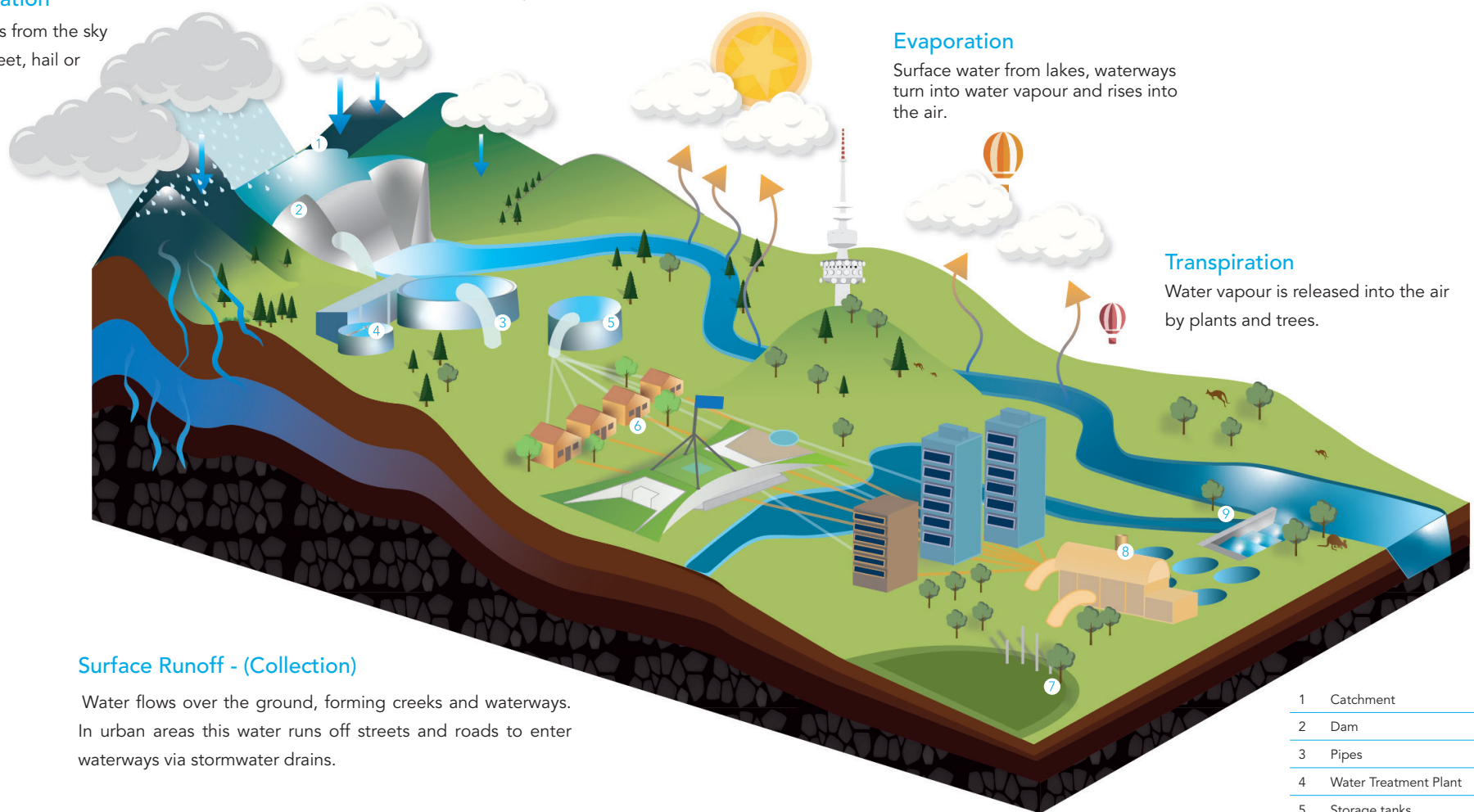
Water falls from the sky as rain, sleet, hail or snow.

Evaporation

Surface water from lakes, waterways turn into water vapour and rises into the air.

Transpiration

Water vapour is released into the air by plants and trees.



Surface Runoff - (Collection)

Water flows over the ground, forming creeks and waterways. In urban areas this water runs off streets and roads to enter waterways via stormwater drains.

- 1 Catchment
- 2 Dam
- 3 Pipes
- 4 Water Treatment Plant
- 5 Storage tanks
- 6 Urban water use
- 7 Irrigation
- 8 Sewage treatment plant
- 9 Released back into the river

The Hydrological Cycle



- 1 Catchment
- 2 Dam
- 3 Pipes
- 4 Water Treatment Plant
- 5 Storage tanks
- 6 Urban water use
- 7 Irrigation
- 8 Sewage treatment plant
- 9 Released back into the river

Cut and paste the terms above to label the ACT water cycle.

Precipitation	Condensation	Collection- Runoff	Evaporation	Transpiration
---------------	--------------	--------------------	-------------	---------------

The Hydrological Cycle

Precipitation

Water falls from the sky as rain, sleet, hail or snows

Condensation

Water vapour rises into the atmosphere, where the air is colder. The colder air causes water vapor to condense into water droplets and clouds.

Evaporation

Surface water from lakes, waterways turn into water vapour and rises into the air.

Transpiration

Water vapour is released into the air by plants and trees.

Infiltration

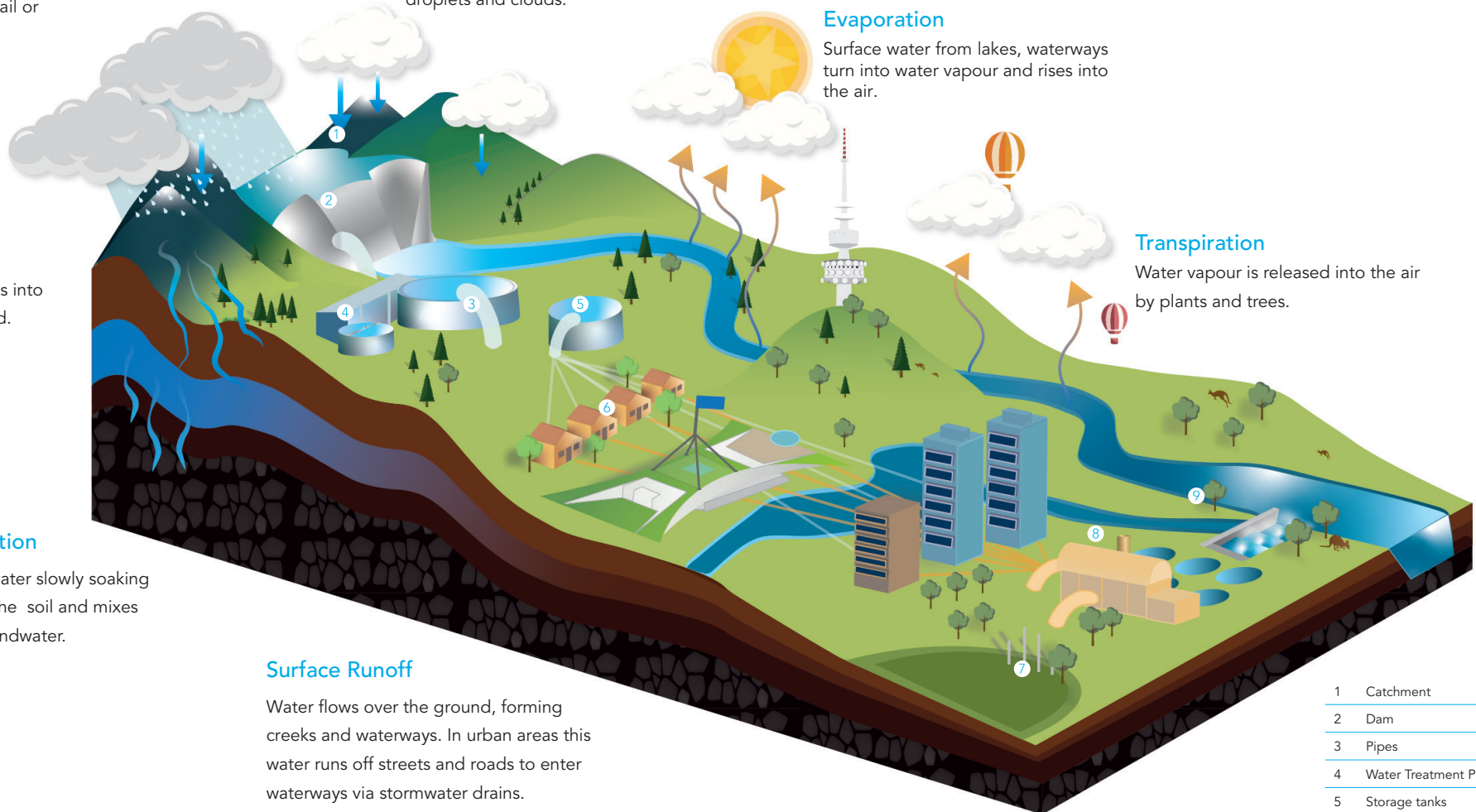
Surface water soaks into soil and the ground.

Percolation

Surface water slowly soaking through the soil and mixes with groundwater.

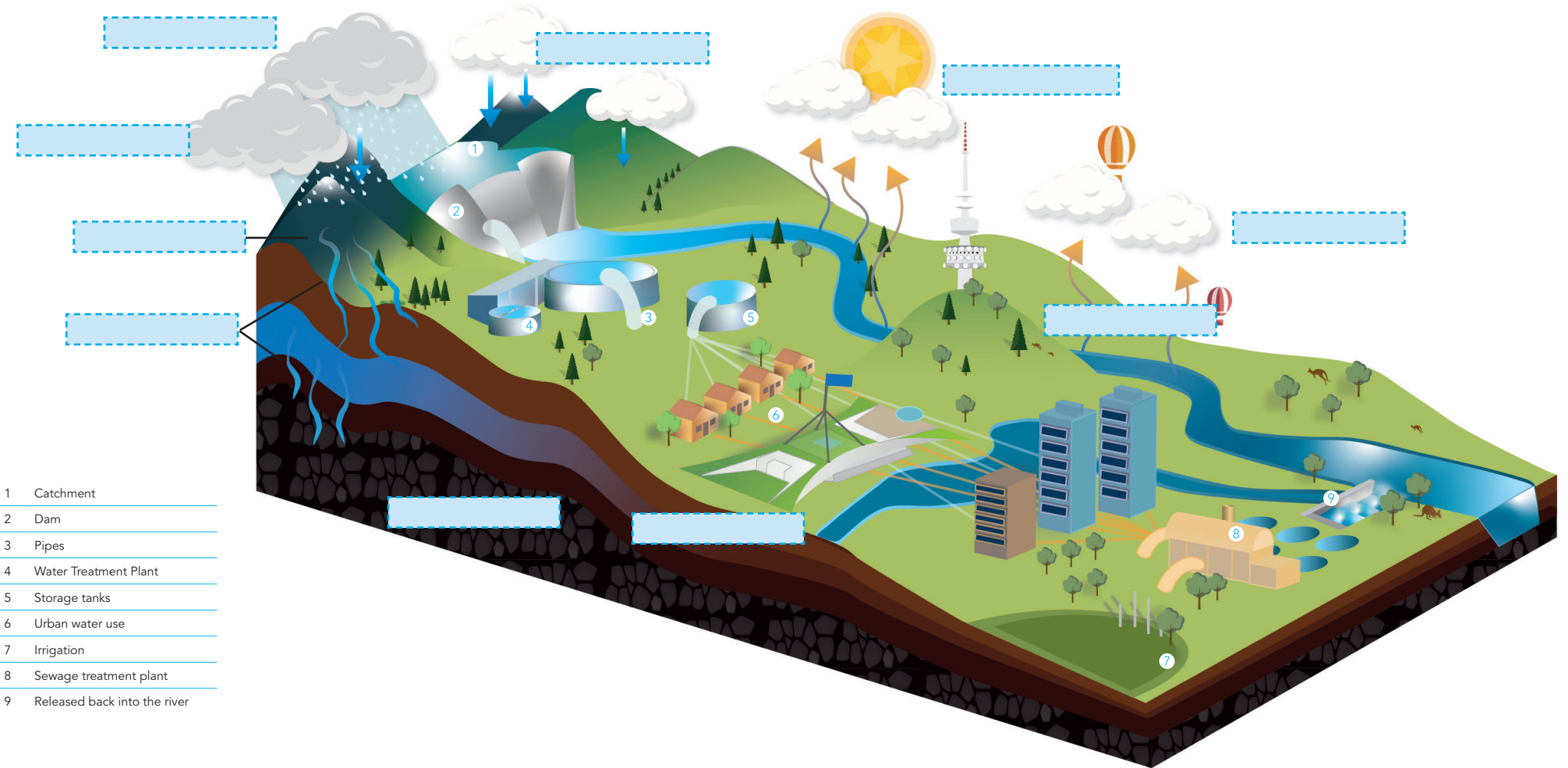
Surface Runoff

Water flows over the ground, forming creeks and waterways. In urban areas this water runs off streets and roads to enter waterways via stormwater drains.



- 1 Catchment
- 2 Dam
- 3 Pipes
- 4 Water Treatment Plant
- 5 Storage tanks
- 6 Urban water use
- 7 Irrigation
- 8 Sewage treatment plant
- 9 Released back into the river

The Hydrological Cycle



- 1 Catchment
- 2 Dam
- 3 Pipes
- 4 Water Treatment Plant
- 5 Storage tanks
- 6 Urban water use
- 7 Irrigation
- 8 Sewage treatment plant
- 9 Released back into the river

Cut and paste the terms above to label the ACT water cycle.

	Rain clouds	Cloud formation	Transpiration	Precipitation
Rock soil	Condensation	Evaporation	Percolation	Infiltration
				Surface run off