

Construction of Odour Control Units (OCU)

Dear Customer

As part of the Belconnen trunk sewer project which will service the growing populations of Belconnen, Gungahlin and Hall, Icon Water will be constructing four OCUs to ensure the reliability of the sewer network is maintained.

The OCUs are being constructed to improve the ventilation of the Belconnen trunk sewer, whilst reducing the impact of the existing ventilation system to the community by treating the air through carbon media to remove all odours prior to discharge. The filters used in the OCU and ventilation stacks absorb gases such as hydrogen sulphide, which is a common source of odours from sewerage systems.

Construction work will include:

- Vegetation removal & revegetation
- Building an access track
- Building the building frame using pre-cast concrete panels lifted in by crane
- Electrical and mechanical fit out
- Installing a ventilation stack next to each OCU
- Restoring all impacted areas and landscaping.



Each OCU will be 20 metres long by 7 metres wide and 4.5 metres high.

Project timing

Construction work on each OCU will begin **during week commencing 2 August 2021** and is scheduled to be completed by mid-2022, weather permitting. Our work hours will be 7am to 5pm Monday to Friday and 8am to 1pm on Saturdays. We will advise you if work is required outside these hours.

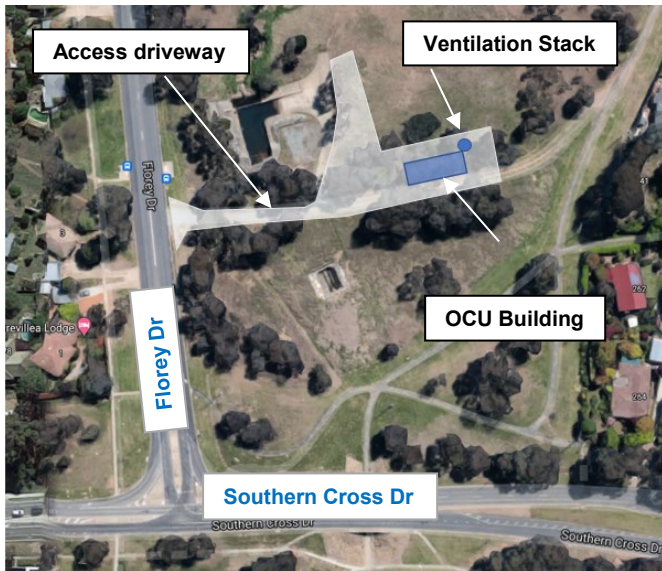
Building Finishes

Icon Water is seeking feedback relating to how the OCU buildings will be finished. Please send us an email, or talk to us on 6248 3111 (option 9) if you have any feedback. Icon Water uses a range of different techniques to paint or finish our infrastructure ranging from graphic art through to simple painting. Icon Water would like to gather community feedback relating to preferences for the finishes on these structures. Below are some example finishes from other projects or that may be applied.

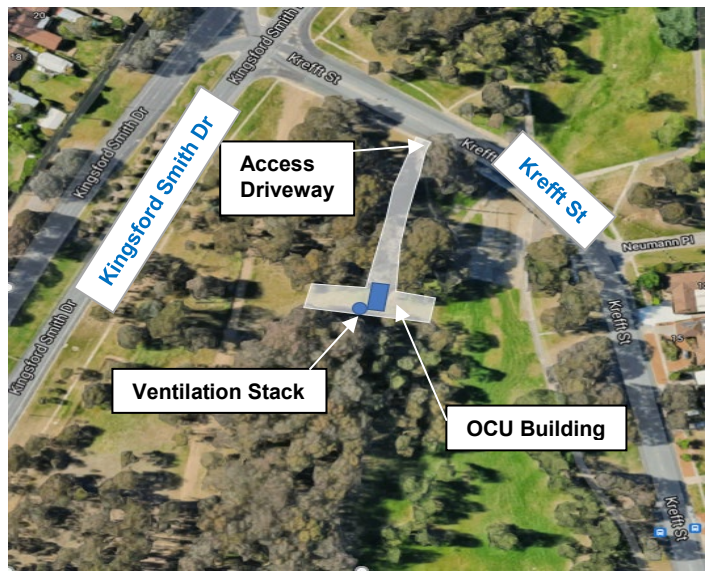


Locations (not to scale)

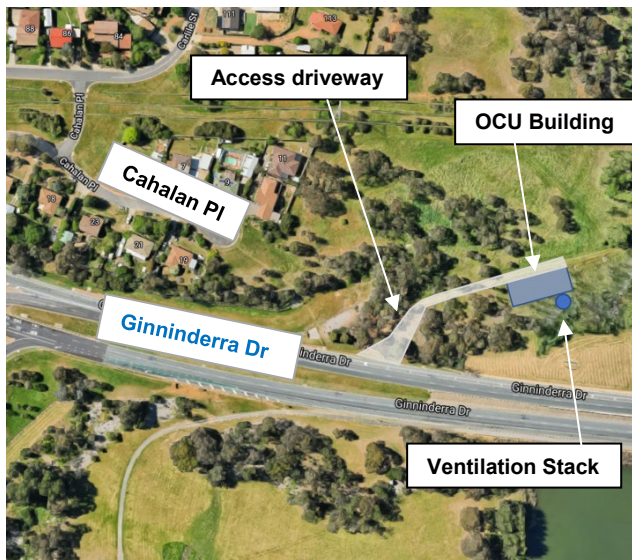
Cnr of Florey Drive & Southern Cross Drive, Latham



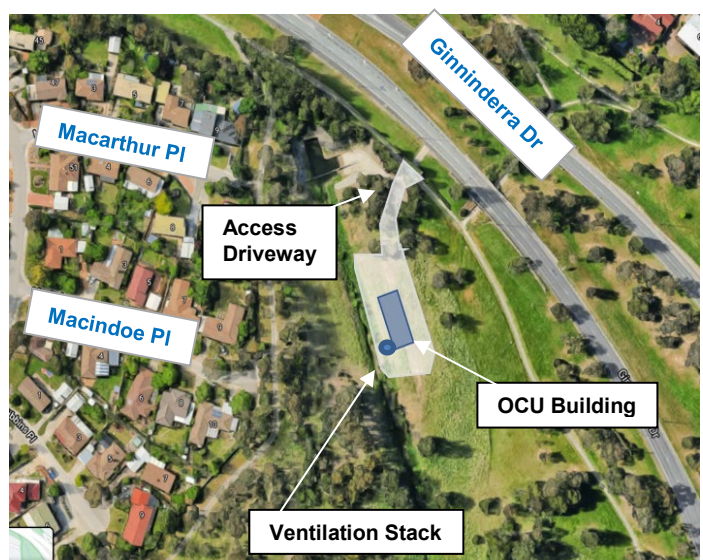
Krefft Street and Kingsford Smith Drive, Florey



Ginninderra Drive, Evatt



Ginninderra Drive, North Latham



What you may notice

You will notice construction machinery including excavators, tipper trucks cranes and light vehicles working within our construction areas.

There will be an increase in vehicle movements, some dust and some noisy activities during work hours. Where possible, we will make every effort to minimise impacts on local residents and the wider community. We will restore the impacted areas to as close as possible to its previous condition at the end of the project.

Where you can find more information and who you can talk to

- Scan the QR code
- Visit our website www.iconwater.com.au/bts
- Talk to Diona's Community Relations team on 1300 131 338

SCAN ME



Yours sincerely

Lisa Quinn

Lisa Quinn
Manager Customer Advocacy and Experience